

4K

SWIT[®]



12GSDI 4K HDR Broadcast Monitor

4K

12G-SDI

4K LCD panel and full 4K interfaces including:

- ▶ 12G-SDI
- ▶ 4×3G-SDI
- ▶ HDMI 2.0
- ▶ SFP Fiber 12G (Optional)

HDR

HLG/PQ/S-log3

Up to 1000nit high bright panel and support the following HDR standards:

- ▶ HLG
- ▶ Dolby Vision PQ
- ▶ SONY S-Log3

AUTO

3DLUT Calibration

Built-in 3DLUT calibration software, support X-rite i1 and JETI Specbos 1211 probes to directly connect with monitor and automatically calibrate within 15min. Delta E<1.0.



BM-U173

17.3-inch 3840x2160

350nit, 1000:1

8-bit, 91.5% DCI-P3

BM-U243

23.8-inch 3840x2160

300nit, 1000:1

10-bit, 94.1% DCI-P3

BM-U275HDR

27-inch 3840x2160

1000nit, 1400:1

10-bit, 97.2% DCI-P3

BM-U315HDR

31.1-inch 4096x2160

1000nit, 1400:1

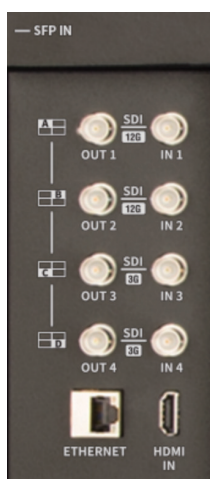
10-bit, 94.5% DCI-P3

4K interfaces

- 12G-SDI (SDI 1 & 2)
- Quad link 3G-SDI (SDI 1/2/3/4)
- HDMI 2.0 4K60P
- SFP Fiber 12G
(Converted to 12G-SDI out)

* The Quad link 3G-SDI supports both Quad mode and 2SI interleave mode.

* The SFP optical fiber adaptor is optional purchased.



Video/Audio Assist

HDR, De-log 3DLUT and User LUT upload

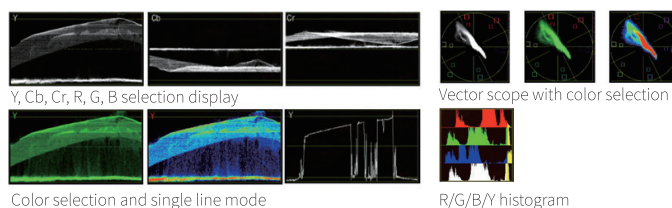
Provide with HLG1000, PQ1000 and S-log3 HDR gamma;

Built-in De-log LUTs including Log-C, S-log2, S-log3, C-log, V-log, RedLogFilm LUTs, to convert to ITU709 directly;

Support user 3DLUT cube files to upload by USB.

Waveform/Vector/Histogram

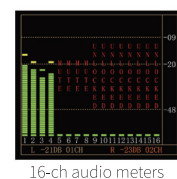
Support waveform selection display (Y, Cb, Cr, R, G, B), and single line mode; support vector scope and R/G/B/Y histogram display, with multiple display position, size and color selection.



Audio meters / Lissajous pattern

Display up to 16-ch de-embed audio level meters, with audio abnormal alerts info, and support select any 2 channels audio to output via 3.5mm socket or speakers.

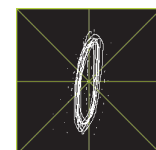
Support audio Lissajous pattern display.



16-ch audio meters

Audio/Video Zero Latency Mode

Support Zero latency mode, the audio/video latency is as low as 1/100 frame under 4K60p, which is a special image processing mode for lip-sync monitoring.



Lissajous

Others

Support TSL 3.1/4.0 UMD display

SDI timecode (LTC, VITC1&2) display

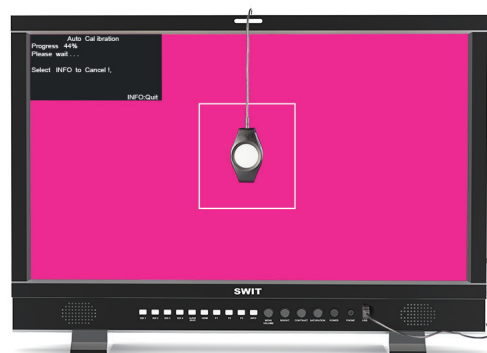
Focus assist display mode

R/G/B/Mono, False color, Zebra stripes

H/V delay, freeze frame

GPI control and webserver IP control

Auto 3DLUT Calibration



JETI Specbos 1211



X-rite i1
(Dedicated version)

With built-in color generator and calibration software, support X-rite i1 (Dedicated version) and JETI Specbos 1211 to directly plug into monitor USB port to auto calibrate.

Calibration time: X-rite i1: **15min**; Specbos1211: **45min**

Calibration result: **$\Delta E < 1.0$**

SWIT Electronics Co., Ltd.

+86-25-85805753

<http://www.swit.cc>

Email: contact@swit.cc

SWIT Electronics America, Inc

1-(408)260-8258

<http://www.swit.us>

Email: info@swit.us

SWIT Electronics Europe GmbH

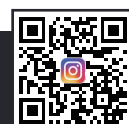
+49(0)20659799339

<http://www.swit-europe.com>

Email: info@swit-europe.com



Facebook Page



Instagram