

# DECK DR8-TB2



**Expand storage capacity up to 80TB**

**A high-speed storage system for an extensive range of applications**

## Embedded disk array controller

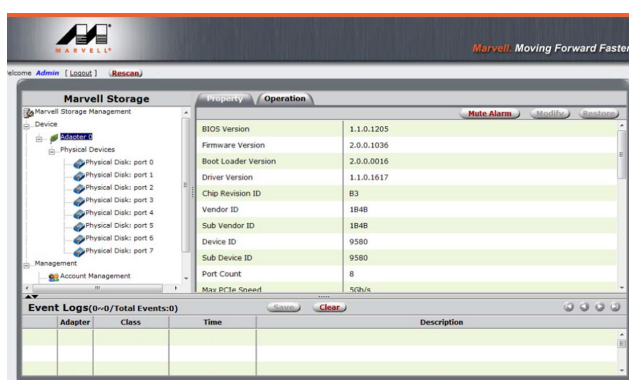
The embedded disk array controller allows the data of a single damaged hard disk to be completing preserved without affecting system efficiency. For users requiring large data storage space, the DR8-TB2's RAID 5 provides the most cost-effective solution for data security and backup. The DR8-TB2 can be installed by following the simple steps in GUI, and users can select to use from the multiple modes, JBOD, RAID 1, RAID 0, RAID 10, RAID 5 or RAID 6. With the hassle-free software installation and setup, users can enjoy the large capacity and content safe storage right after formatting the hard disk.

## Stackable and expandable design for effective space utilization

The DR8-TB2's unique stackable design takes up an area of no more than two sheets of A4 paper, allowing users to stack upwards and save space. The DR8-TB2 can also be installed in server racks, allowing a rack server's storage capacity to be effectively expanded.

## User-friendly GUI

Marvell Config Tool, a Graphical User Interface, for customized performance settings.



## Big storage volume for your creative contents. Up to 80TB.

DR8-TB2 holds any capacity of SATA hard drives up to 10TB per drive bay. With all drive bays installing 8TB drives, in RAID 0 mode, the system will give you a total of 80TB in volume for storage, and under the RAID 5 mode, a total of 70TB in volume for storage with a single drive used for redundancy.





## DECK DR8-TB2

### Designed for both rack installation and desk placement

STARDOM's design team broke away from traditional design and created a brand new flat DECK design. We redefined the placement of each component from the inside out, creating a sturdy yet elegant appearance that is compatible with a 19-inch rack. The DR8-TB2 can be easily placed on your computer desk or be used with your office server placed inside of the audio-visual cabinet and stacked with your other devices.

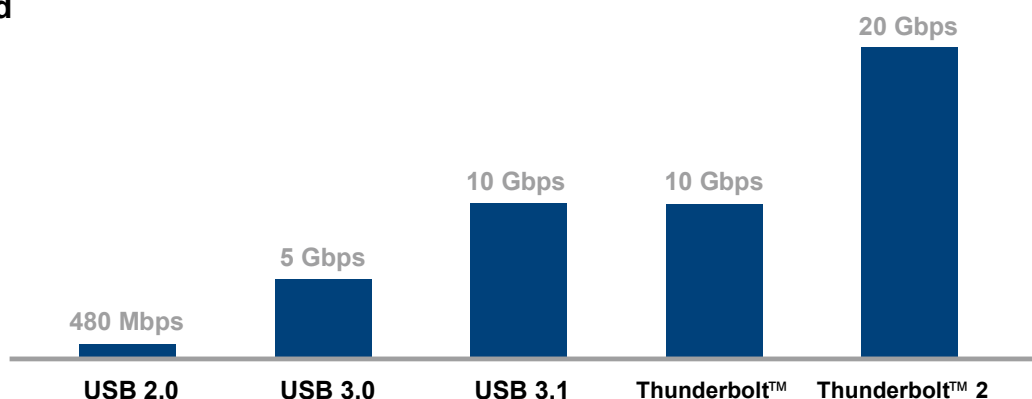
### Compatible with a 19-inch rack

The DR8-TB2 can be easily installed in a standard 19-inch server rack and can be effectively integrated with other video capture devices. Its compact design is perfect for small server racks that need to be moved around. The DR8-TB2 can also be integrated with other servers to make a large-capacity workstation, making it a breeze for small business owners and independent departments to back up important data.

### Backup department's important data with Mac mini Server

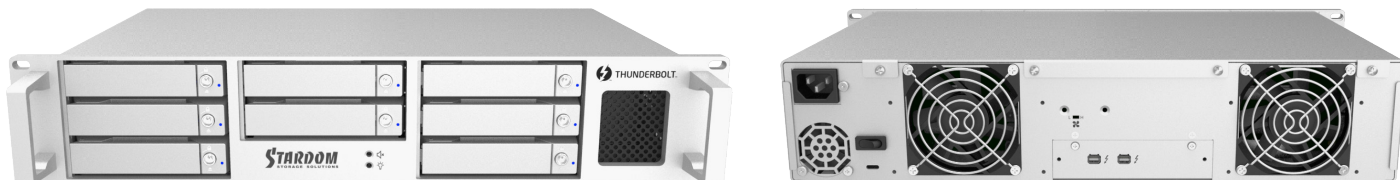
Do you worry that disk failure may cause data loss when using a Mac mini Server as the platform for enterprise database or resources control center? By working with DR8-TB2, you can both backup data in DR8-TB2 and share the spare space to meet other storage requirements for full spectrum data backup. The Mac mini's Thunderbolt interface allows up to six installations of the DR8-TB2.

### More Speed



# DR8-TB2 Specification

## Product Views

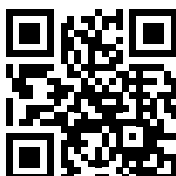


## Specification

Model no.	DR8-TB2
Interface	Thunderbolt 2 Port x 2 ( up to 20 Gbps )
Support Hard Drive	8 x 3.5" /2.5" SATA HDD/SSD ( up to 6 Gbps ) / Support large volume up to 8TB
RAID Level	Independent Mode ( JBOD ) / Safe Mode ( RAID 5 / RAID 1 / RAID 6 ) / Speed Mode ( RAID 0 )
Electrical and Operating Requirements	<ul style="list-style-type: none"> <li>* Line voltage: 100-240V AC</li> <li>* Frequency: 50Hz to 60Hz, single phase</li> <li>* Maximum continuous power: 300W</li> <li>* Operating temperature: 50° to 95° F (10° to 35° C)</li> <li>* Storage temperature: -4° to 116° F (-20° to 47° C)</li> <li>* Relative humidity: 5% to 95% noncondensing</li> </ul>
Cooling System	8cm Low noise fan x 2
LED Indicators	Yes
Dimension	427(W)×94(H)×244.4(L) mm
Product Code	EAN: 4711132865257 UPC: 884826502371
Carton	2 pcs per carton
Packing Content	<ul style="list-style-type: none"> <li>* DR8-TB2 x 1 ( with removable drive tray enclosed x 5 )</li> <li>* AC Power Cable x 1</li> <li>* Accessory kit</li> <li>* Rackmount handle</li> <li>* Foot pads</li> <li>* User Manual x 1</li> </ul>

### Stardom Headquarter

7F-9, No.16, Lane 609, Sec.5, Chung-Hsin Rd.,  
 241 San-Chung Dist., New Taipei City, Taiwan  
 Website : [www.stardom.com.tw](http://www.stardom.com.tw)  
 E-mail : [service@stardom.com.tw](mailto:service@stardom.com.tw)



Distributor