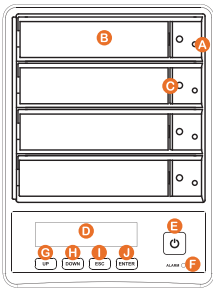


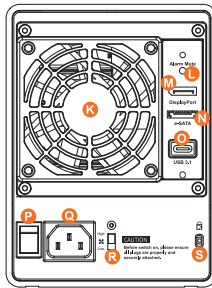
SR4-SB31+ 快速安裝導引

產品示意圖與配件表

前視圖



背視圖



- | | | |
|------------|--------------|--------------|
| A 硬碟讀取燈 | H DOWN 按鍵 | O USB3.1 連接埠 |
| B 硬碟抽取盒把手 | I ESC 按鍵 | P 電源總開關 |
| C 硬碟抽取盒頂針孔 | J ENTER 按鍵 | Q 電源插座 |
| D LCM 顯示螢幕 | K 風扇 | R 風扇轉速切換按鈕 |
| E 電源觸控開關 | L 靜音開關 | S 防竊鎖孔 |
| F 系統指示燈 | M Display 埠 | |
| G UP 按鍵 | N e-SATA 連接埠 | |

打開包裝外盒後，包裝內容應包含以下組件：

產品配件表
SR4-SB31+ 產品本體 X1(內含抽取盒 x4)
USB 3.1 連接線 x1
e-SATA 連接線 x1
AC 電源線 x1
把手 x1
快速安裝導引 x 1
螺絲及頂針鑰匙

- 請確認相關配件與產品本身是否有受損或配件缺少，若有任何疑問請與本產品供應商聯絡。
- 請前往官網-產品資料下載頁面 (<http://www.stardom.com.tw/STAR-DOM2016/download.php>) 下載驅動程式以及其餘相關資源。



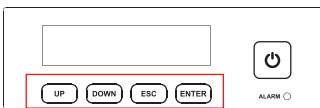
1

V1.0 (Octr. 2019)

- 透過前方的 LCD 與按鍵來設定您所需求的儲存模式。(請參考「前面板操作及 LCD 訊息說明」)
- 開機後，您的作業系統將會自動辨識到 RAID 容量；待辨識成功後，請依據您所需的儲存格式，將系統內的硬碟依照作業系統的指示完成格式化。待格式化完成後，便可直接執行 RAID 系統。
- 若暫時不使用產品，可讓產品進入關機模式：先輕壓產品正面的電源觸控開關，直到電源符號「O」燈號熄滅；若要使用產品則輕壓產品正面的電源觸控開關，直到電源符號「O」發亮。
- 假使長時間不使用產品，則請將產品電源總開關閉：先輕壓產品正面的電源觸控開關，直到電源符號「O」燈號熄滅，再將產品背面的電源總開關扳動至「O」讓電源關閉。

※ 本產品在關機模式下為接近完全斷電的狀態，硬碟、LCD 與風扇均停止運作，僅提供一小部分電力為之後啟動作準備。

前面板操作



Enter: 進入下一層 或是 確認
Esc: 跳回上一層 或是 取消
Up / Down: 循序選擇項目

使用者可經由面板進行 RAID 操作，SR4-SB31+ 預設值為 JBOD，可進入 Quick Setup 快速設定成其他 RAID 模式使用。

如需進行其他設定，請進入官網相關產品頁面下載使用者手冊，參照「5. 前面板操作及 LCD 訊息說明」進行操作。

其他應用

支援 Display 埠

- SR4-SB31+ 提供一個 Display 埠支援 DP1.1a，最高可支援 4K@30Hz 畫質，相容於具有 Display 埠的螢幕及連接線。
- 透過第三方 Display 埠轉接器或轉接線，可以連接具備 Mini Display 埠的螢幕。
- 透過第三方主動式 Display 埠轉接器或轉接線，可以連接具備 VGA、DVI 或 HDMI 的螢幕。

支援 USB Power Delivery (USB-PD)

- USB Power Delivery (簡稱 USB-PD)，為 USB 開發者論壇 (USB-IF) 推出快速充電技術與統一連接線標準。SR4-SB31+ 支援 USB-PD，若採用 USB Type-C 到 USB Type-C 介面，可提供 5V/3A (15W)，9V/2A (18W)，12V/2A (24W) 電力給主機端。
- 若所連接之主機端為支援 USB-PD (5V/9V/12V) 充電的筆記型電腦，在 SR4-SB31+ 開機的狀態下，將筆電關機或重新開機後，USB-PD 仍會維持充電功能。
- 如電腦無法讀取到 SR4-SB31+，請重新連接 Type-C 連接線，或是將 SR4-SB31+ 關機再啟動，方可正常連接使用。

3

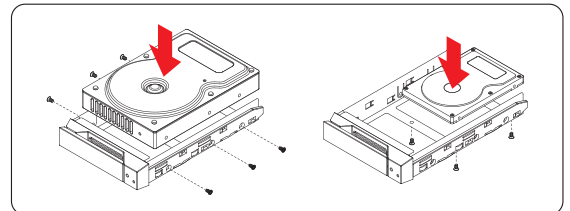
指示燈燈號說明

狀態	電源指示燈	系統警示燈	硬碟狀態顯示燈		蜂鳴器	
			RAID	JBOD	RAID	JBOD
無硬碟	藍燈恆亮	——	——	——	——	——
資料存取	藍燈恆亮	——	藍燈閃爍	——	——	——
硬碟閒置	藍燈恆亮	——	藍燈恆亮	——	——	——
資料重建 - 來源碟	藍燈恆亮	——	藍燈閃爍	——	——	——
資料重建 - 資料碟	藍燈恆亮	——	紫燈閃爍	——	——	——
風扇故障	藍燈恆亮	紅燈恆亮	藍燈恆亮	——	YES	——
過熱	藍燈恆亮	紅燈恆亮	藍燈恆亮	——	YES	——

硬體安裝

請參照下列步驟，完成 SR4-SB31+ 的硬體安裝：

- 將主機置放於平穩空間上，並確認散熱風扇沒有被擋住，且四周有適當的散熱空間。(請避免接近水源或是其他容易造成產品損壞的環境)
- 請使用配件中所附的頂針插入硬碟抽取盒頂針孔，開啟硬碟抽取盒把手便將抽取盒取出。
- 安裝 3.5 吋硬碟，請使用 6 顆零件包內附的大顆螺絲加以固定；安裝 2.5 吋硬碟，請使用 4 顆零件包內附的小顆螺絲加以固定。
- 硬碟安裝完成後，請將抽取盒平移放入主機內，並關上把手。



注意：不建議使用不同廠牌，或是同廠牌不同型號的硬碟，避免影響效能。

- 將 AC 電源線與 SR4-SB31+ 連接，再將 AC 電源線與電源插座連接。
- 將配件中的連接線分別接到電腦與 SR4-SB31+ 相關連接埠。
- 先將產品背面的電源總開關扳動至「I」讓電源開啟，再輕壓產品正面的電源觸控開關，直到電源符號「O」發亮。

2



★ 筆記型電腦需要支援 5V/9V/12V 充電。

產品使用注意事項

- 當系統運作時，請勿任意移除任何一顆硬碟，以免導致資料遺失。
- 完成系統初始化安裝後，在使用上請勿任意變更硬碟位置；此動作將可能導致系統無法形成 RAID。
- 在新增或變更 RAID 模式後需重新啟動產品，以確保完成更新為新的 RAID 模式。
- 當支援 USB PD 功能的 Notebook 僅連接 SR4-SB31+ 時，SR4-SB31+ 可以提供最多 24W (12V/2A) 的電源供應，但後續再連接上原本 Notebook 的電源供應器時，主要供電來源將由 Notebook 自行判斷，以供應較大瓦數的電源為主，此時的 SR4-SB31+ 有可能會因此中斷供電並重新被 Notebook 辨識，因此當要接上其它電源時，請務必先確認當下 SR4-SB31+ 並沒有資料存取的動作。
- SR4-SB31+ 的 PD 功能，最多僅能提供 24W，主要在延長 Notebook 的使用時間，與原本 Notebook 電源供應器的瓦數有落差，以 Macbook Pro 13" 為例，電源供應器為 60W，假設使用原本的電源供應器充飽電需要 2 小時，透過 SR4-SB31+ 大約會需要 3 倍的時間。因此如果需要長時間使用 Notebook，建議先接上 Notebook 原本的電源供應器後再接上 SR4-SB31+。
- 當您需要關閉或移除 SR4-SB31+ 時，務必透過您所操作的作業系統中執行硬碟安全移除後，方進行電源關閉的動作。
- 強烈建議除了使用 SR4-SB31+ 的資料儲存功能外，請針對重要資料備份到另一個儲存裝置上或遠端備份，雙重備援您重要的資料。若您儲存在 SR4-SB31+ 的資料損毀或遺失，STARDOM 將不負任何的責任。

感謝您使用 銳銳科技股份有限公司 的產品。

本手冊裡的資訊在出版前雖然已經被詳細確認，但實際產品規格將已出貨時為準；任何的產品規格或相關資訊更新，請您直接上 www.STARDOM.com.tw 網站查詢，或直接與您的業務聯絡窗口聯繫，本公司將不另行通知。

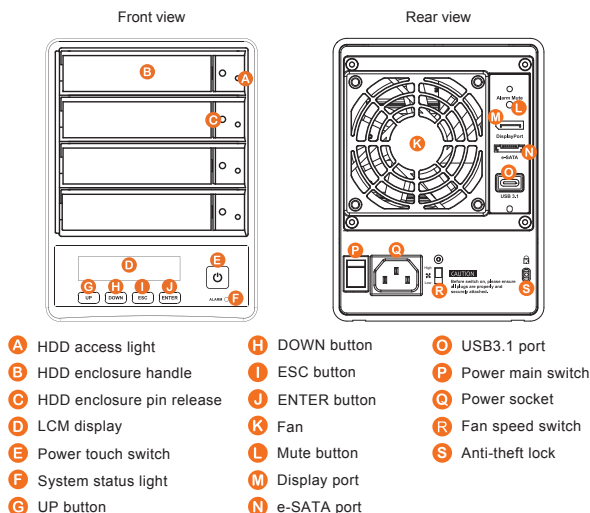
如果您對 銳銳科技 的產品有任何疑問，或是想獲得最新產品訊息、使用手冊或軟體，請您聯絡 services@stardom.com.tw，我們將儘速回覆您。

STARDOM 為 銳銳科技股份有限公司 旗下品牌之一
本說明相關產品內容 銳銳科技股份有限公司 版權所有

4

SR4-SB31+ Quick Installation Guide

Package Contents and Product Views



Open the package and you should find the following :

Contents of Product Package	
SR4-SB31+ x 1 (with removable drive tray enclosed x 4)	
USB 3.1 Cable x 1	
e-SATA Cable x 1	
AC Power Cable x 1	
Handle x1	
Quick Installation Guide x 1	
Screws & Pins	



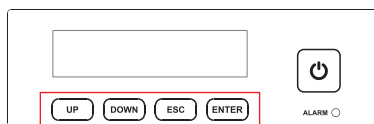
1

V1.0 (Octr. 2019)

- Connect the cable to the PC and the SR4-SB31+ port.
- First turn the power main switch on the back of the product to "I" to turn the power on, then gently press the power touch switch on the front of the product until the power symbol "O" lights up.
- Set the storage mode using the LCD and buttons on the front (please refer to section 5 for front panel and LCD information).
- After boot-up, your operating system will automatically detect the storage capacity of your hard drives. Please follow the operating system instructions to configure and format your drives. The formatted drives can be configured for the RAID setup.
- If you are not using the product for a while, you can put the product into shutdown mode: first press the power touch switch on the front of the product until the power symbol "O" is off; if you want to use the product, gently press the power touch switch on the front of the product until the power is turned on. The symbol "O" is illuminated.
- If the product is not used for a long time, please turn off the product main power switch: first gently press the power touch switch on the front of the product until the power symbol "O" is off, then turn the power main switch on the back of the product to "O" to turn off the power.

※ The product is in a state of near-complete power-off in shutdown mode, and the hard disk, LCD, and fan are all out of operation, providing only a small portion of power for preparation for subsequent startup.

Description of Front Panel Operation



Enter: Enter to next level or Confirm
Esc: Back to next level or Cancel
Up / Down: Select Items

Users can set the RAID mode using the LCD and buttons on the front. The default is JBOD mode. With the "Quick Setup" feature, users can quickly change other RAID modes. For other settings, please go to the official website related product page to download the manual, refer to "5. Description of Front Panel Operation and LCD Information".

Other Applications

Support DisplayPort

- The SR4-SB31+ offers a DisplayPort support DP1.1a, provides up to 4K@30Hz resolution, and is compatible with monitor and cables with DisplayPort.
- By using third-party's DisplayPort adapter, it can be connected to the monitor with Mini DisplayPort interface.
- By using third-party's active DisplayPort adapter, it can be connected to the monitor with VGA, DVI and HDMI interface.

Support USB Power Delivery (USB-PD)

- USB Power Delivery (USB-PD) introduces charging technology and unified cable standards. SR4-SB31+ supports USB-PD. Use USB Type-C to USB Type-C cable, it can provide up to 24W (5V/3A (15W), 9V/2A (18W), 12V/2A (24W)) power charging to the host.

3

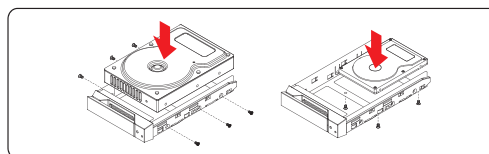
- Please check the product and accessories for any defect or missing parts. If you have any questions, please contact your product supplier.
- Please visit the official website - Download page (<http://www.stardom.com.tw/STARDOM2016/download.php>) to download drivers and other related resources.

Visual Status Indicator Definitions

Status	Power LED	Larm LED	HDD LED		Buzzer	
			RAID	JBOD	RAID	JBOD
No HDD	Blue light always on	---	---	---	---	---
Access	Blue light always on	---	Blue light flashing		---	---
Disk Idle	Blue light always on	---	Blue light always on		---	---
Rebuilding - Source	Blue light always on	---	Blue light flashing	---	---	---
Rebuilding - Target	Blue light always on	---	Purple light flashing	---	---	---
Fan Failed	Blue light always on	Red light always on	Blue light always on		YES	
Over Temp	Blue light always on	Red light always on	Blue light always on		YES	

Hardware Installation

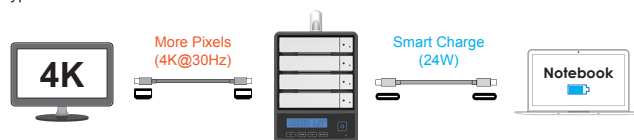
- Place the system on a stable surface. Ensure that it is well ventilated without blockage to the vent and kept away from areas near water and damage prone areas.
- Use the ejector pin included in the accessory kit and inserted into the pin release opening to eject the removable drive tray latch and extract the removable drive tray.
- For 3.5" HDD/SSD, please secure it by use six the larger screws included in the accessory kit. For 2.5" HDD/SSD, please secure it by use four the smaller screws included in the accessory kit.
- When the hard drive installation has been completed, insert the hard drive tray into the system horizontally and secure the latch into place.
- Connect the AC power cable to the SR4-SB31+, and then plug the AC power to the wall socket. Boot-up the unit.



Note: Please avoid using hard disk drives from different manufacturers or different models from the same manufacturer as this may impact system performance.

2

- If the connected host is a notebook that supports USB-PD (5V/9V/12V) charging, it will remain charging after the notebook is powered off or restarted while the SR4-SB31+ is still power on.
- If the SR4-SB31+ cannot be recognized after the notebook restarted, please reconnect the Type-C cable or restart the SR4-SB31+.



★ Notebook will need to support 5V/9V/12V charge.

Important Notice

- When connected to the computer system, it's prohibited to remove, insert or swap the hard drive while data transfer is being performed.
- It's prohibited to change the positioning of the drives once the initial installation has been completed as the changes made to the drive positions may destroy the RAID formation.
- The product needs to be restarted after adding or changing the RAID mode, and the update is guaranteed to be the new RAID mode.
- When the Notebook which support USB PD function is only connected to SR4-SB31+, SR4-SB31+ can provide up to 24W (12V/2A) power supply, but if then connected to other power supply such like the original Notebook power supply, Notebook will automatically judge which one will be the main power source, usually the one which can provide more Wattage will be. At this time, SR4-SB31+ may be interrupted and re-identified by the Notebook. Therefore, before connecting to other power supplies, please make sure that there are no data accessed between Notebook and SR4-SB31+.
- SR4-SB31+ can only provide 24W at most, which is different from the original Notebook power supply. It mainly to extend the Notebook's usage time. Take Macbook Pro 13" as an example, the original power supply is 60W, assuming it take 2 hours for it to fully charge the battery, use SR4-SB31+ might need three times time. Therefore, if user need to use Notebook for a long time, it is recommended to connect the original power supply first before connect SR4-SB31+.
- Whenever turning off or unplugging the SR4-SB31+ from your computer system becomes necessary, always remember to safely remove it from your operating system first.
- It is highly recommended for users to back up important data contained within the SR4-SB31+ unit on a regular basis or whenever the user feels necessary to a remote or a separate storage device. Stardom will not be responsible for any lost of data caused during the use of the unit or the recovery of the data lost.

Thank you for choosing **STARDOM's** product.

The information provided in this manual was checked before publication, but the actual product specifications may have changed before shipping; Latest product specifications and updates can be found at www.STARDOM.com.tw or through your sales representative. No separate notifications will be provided by our company.

If you have any questions about RAIDON products or would like to receive the latest product information, instruction manuals, or firmware, please contact services@stardom.com.tw for assistance.

STARDOM is one brand under **RAIDON TECHNOLOGY, INC.**

All product-related content in this manual are copyrighted by **RAIDON TECHNOLOGY, INC.**

4