



# 0108B(SYSCOMT1000) Wireless Intercom System

Shenzhen Hollyland Technology Co.,Ltd

# SyscomT1000 Intercom System Introduction



- Telecom level audio quality, effective coverage 300m
- High-capacity lithium battery built-in belt-pack, support quick charging
- Large size colorful LCD display, can be used as TALLY light
- Professional LEMO headset interface, compact and durable
- Support dynamic mic headset, effectively reduce environmental noise
- Compatible with 3.5mm headset of Android, Apple and etc

# Syscom1000T Intercom System Introduction

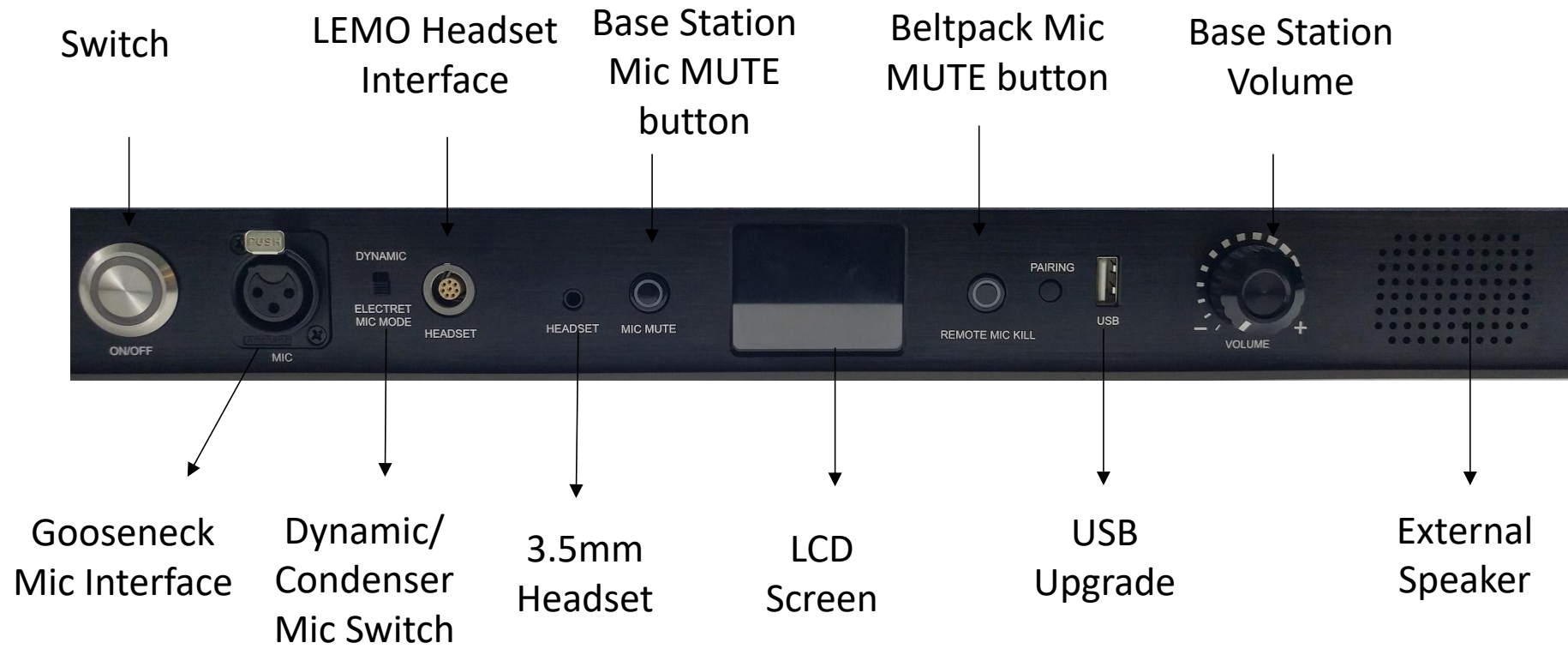


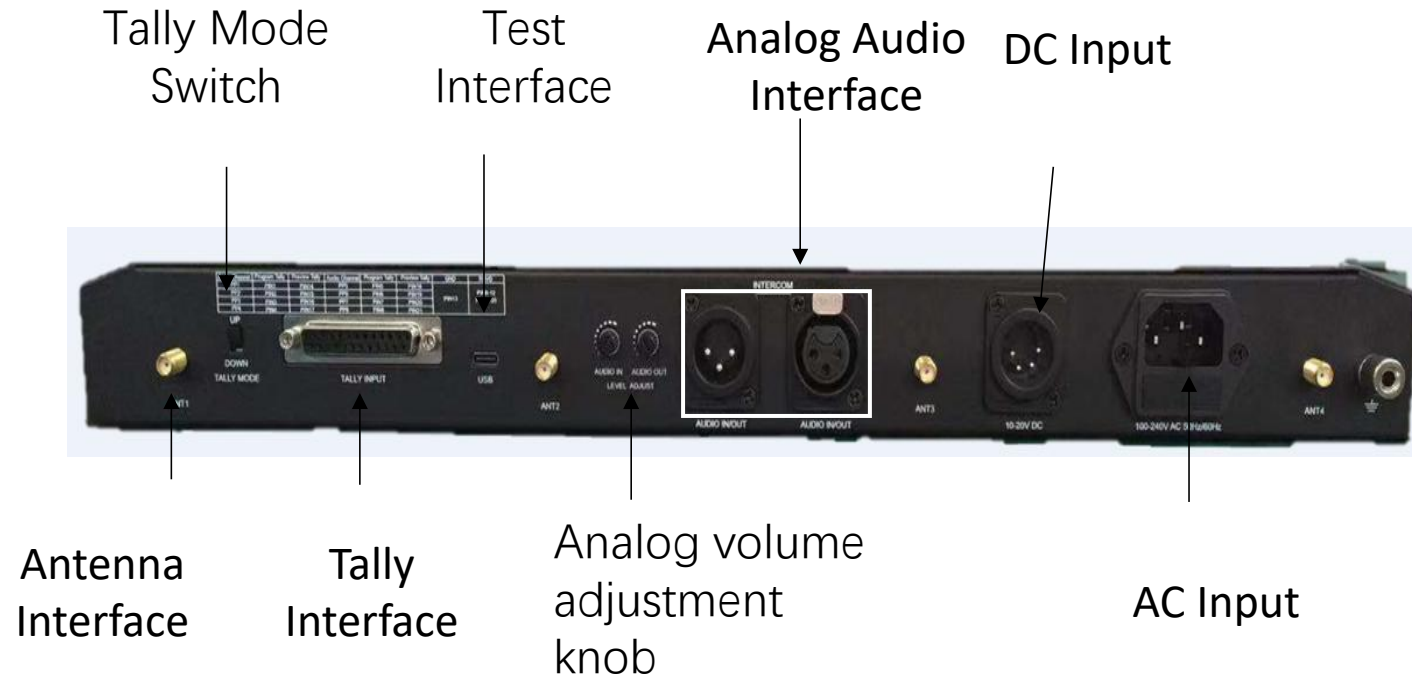
- Beltpack menu with advanced setting function, can be set to multiple work mode.
- Support maximum 10 audio(8 beltpacks+1 main station+1 analog audio in).
- Base station with mute key, supporting muting all beltpacks with one simple press.
- Base station with a pair of four-wire external analog audio interface, support 2 base stations cascade connected.
- Easy operation, unbox and use.
- Support USB upgrade.

# SyscomT1000TIntercom System Specification



	Base Station	Beltpack
Interface	Antennna Interface x4 4-wire Audio Input & Output Interface x 2 25 PIN Tally Input Interface DC IN, AC IN USB Interface XLR Interface 8-pin LEMO Headset Interface 3.5mm Audio Interface	Antennna Interface x 2 3.5mm Audio Interface 8-pin LEMO Audio Interface 3.5mm Tally Output Interface USB Type-C Interface
Power Supply Voltage Range	10-20V DC & 110-240V AC	4000 mAh Polymer Lithium Battery
Power Consumption	<6W	<3w
Size	482.6x175x44.4 mm	120x71x25 mm
Frequency Band	1.9GHz	1.9GHz
Modulation Mode	GFSK	GFSK
Transmit Power	Max 24dBm	Max 24dBm
Receiver Sensitivity	-92dBm	-92dBm





**Note:**

- Beltpacks mic KILL light
1. Light on: beltpacks' MIC muted(beltpacks can call base station to request unmuting by long pressing PAIR button on the side panel).
  2. Light flicker: belt pack requesting .communication
  3. Light off: all belt packs mic are open.



- Volume Control and Power Switch – Turns the power on/off and controls headset volume.
- Lithium battery life is 10hrs if fully charged. Supporting Type-C fast charging, 30 min charged, its capacity can support 3h use.
- Long press middle button, enter menu, the first option is pairing(belt pack can pair only in LOST and NULL status), the second option is tech info.
- Long press mute/call button to switch MUTE/CALL status. Double click on the button to switch CALL/MUTE.
- Belt pack standardly equipped with Pro LEMO headset, support 3.5mm headset.
- Belt pack in MUTE status by default.
- LCD screen, Stronger color TALLY light for indication.



# Comparison with Syscom1000TE



- Base Station:

- Removed XLR headset interface, added pro LEMO headset interface

- Added MIC switch, support dynamic gooseneck mic and condenser mic

- Added remote MIC Kill button to mute all beltpacks

- Added analog audio input and output volume knob

- Tally interface changed from 2 DB15 to 1 DB25



# Comparison with Syscom1000TE



- Beltpack: Added pro LEMO headset interface  
Added big sized color LCD display  
Changed to built-in lithium battery power  
USB interface changed to Type-C type, support fast charging
- Headset: Upgraded to dynamic mic, effectively reduce environmental noise  
Headset interface changed to 8-pin LEMO interface
- Function: Pair mode changed to USB cable pair  
Beltpack added scene mode selection  
Base station added one button MUTE all beltpack function

# Syscom1000T Optional Accessories



1/4 Cold Shoe



External TALLY Lamp



TALLY Cable  
(according to switcher model)



D-TAP to XLR DC Cable



Antenna Extend  
Cable

# Connection Between Syscom1000T and ClearCom 702 Wired Intercom System



2-wire/4-wire



## 4. 2-Wire/4-wire

ClearCom MS-702, the most popular wired intercom system



2-wire interface:

2-wire interface normally in 3-pin XLR shape, pin definition:

- 1--» GND
- 2--» Power+Mic(Modulation Signal)
- 3--» Analog Audio(Analog signal)

4-wire interface

4-wire interface normally in one group of

XLR(Male+Female)

Male output(AUDIO IN), Female input(AUDIO OUT)

- 1--» GND
- 2--» Analog Audio(Analog signal)
- 3--» Analog Audio(Analog signal)

# Common Switchers



Panasonic 410 (DB15 x2)



Datavideo HS2850 (DB25)



SONY MCS-8M (DB15)



FOR-A XT-100(DB25)



BMD Switcher  
(RJ45 Port, TALLY conversion box needed)

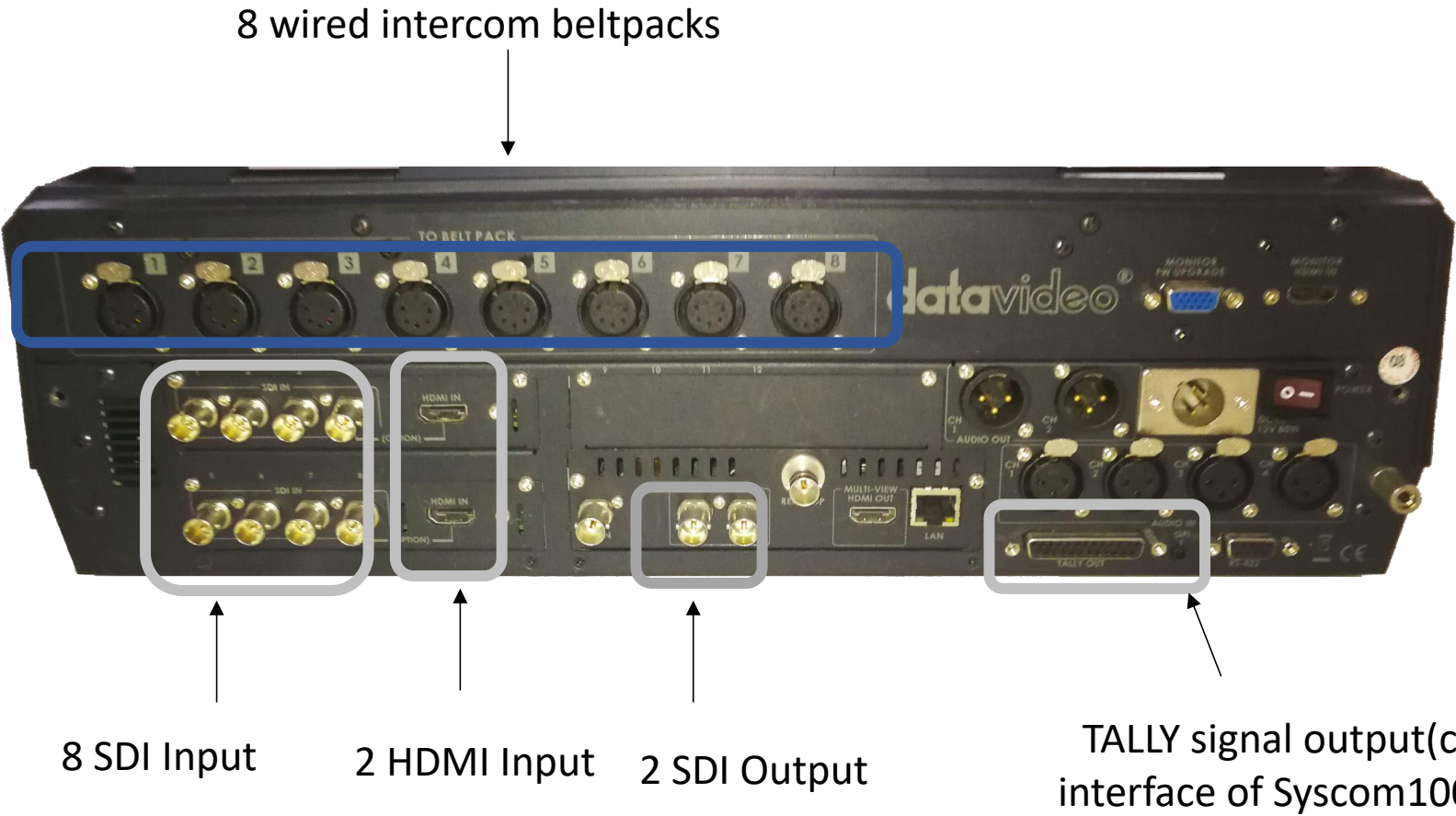


ROLAND Switcher(DB25)





# Common Switcher Rear Panel Interface

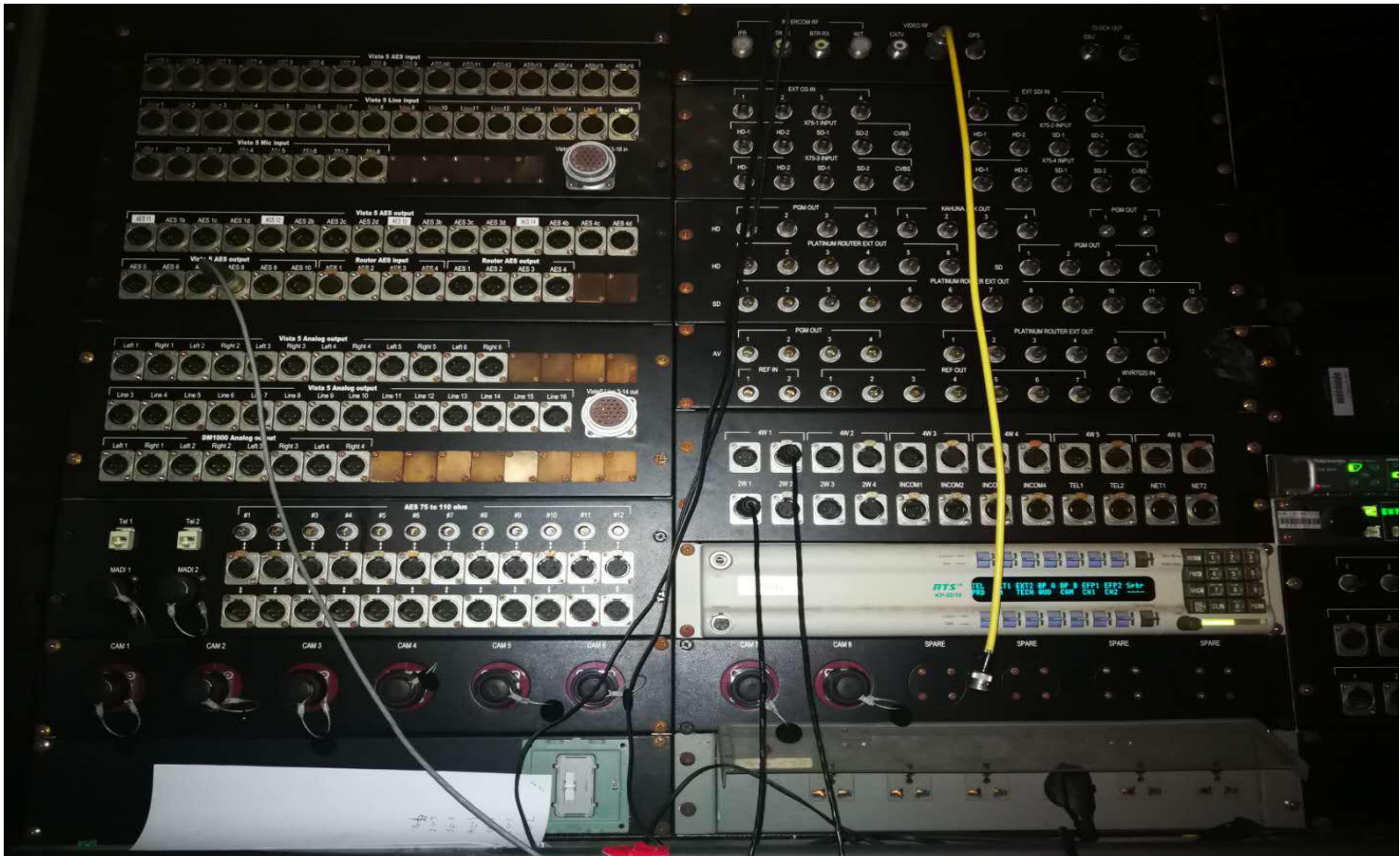




# EFP Box & Outside Broadcast Van



# Broadcast Van Rear Panel Interface





# Application



# SyscomT1000 FAQ



1. Why background noise of beltpack is a little big in office?

A: The beltpacks of SyscomT1000 have 2 work modes: Quite Mode and Noisy Mode. The office is a quite environment, thus quite mode should be used. Noisy mode should be used in concert and other noisy circumstances.



2. My voice volume heard by other is very low when using my own headset.

A: Enter beltpack setting, change mic type to condensor mic.



3. Why others' voice volume is low when using standardly equipped pro headset?

A: 1. Enter setting of beltpack, make sure the mic type is correctly set, LEMO headset is dynamic mic  
2. The headset mic should face to your mouth and keep its distance 3cm. Because dynamic mic has strong directivity and weak sensitivity.

# SyscomT1000 FAQ



4. Why the voice volume of gooseneck mic of base station heard by others is very low?

A: The standardly equipped gooseneck mic is dynamic mic, should keep 5cm distance to mouth, not too far



5. Why beltpack can't be heard by others?

A: Long press button on the side panel, switch to CALL status.



6. How long can battery of syscom1000T beltpack work? How long does it takes to fully charge? How long can it work after 30 min charging?

A: It takes 3 hours to be fully charged, battery life is 10hrs. It can work 3 hours after 30 min quick charging.



# FAQ



7. What if beltpacks want to talk after being muted by base station?

A: Long press the mute/call button of side panel, the base station REMOT MUTE button will flicker red light, after pressing this button, all the beltpacks will unlock MUTE status and be able to talk.



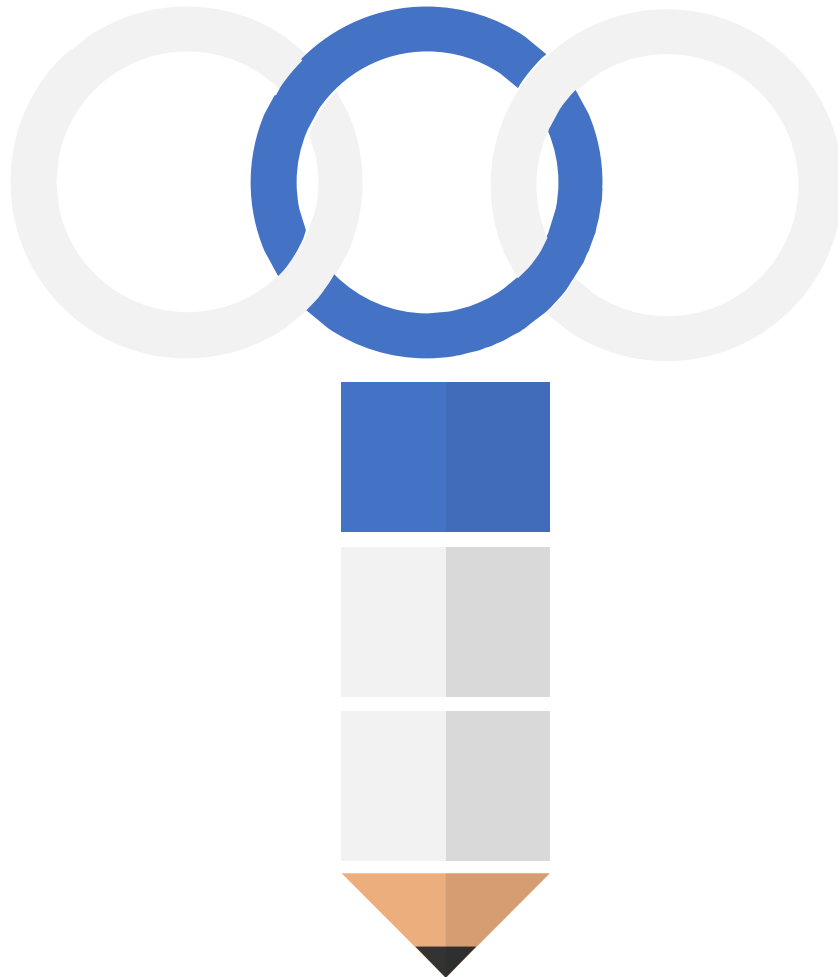
8. How to pair the new bought beltpack and base station?

A: 1. Long press the middle button of beltpack, enter setting menu, select pair option, choose beltpack number, select PAIR option;  
2. When beltpack shows PAIRING..., connect beltpack and base station by USB cable, wait for 2 sec then pair succeed.



9. When syscom1000T connected with ClearCom702, the audio volume from 702 very low?

A: Rotate the AUDIO IN on the rear panel of base station to enlarge AUDIO IN volume.



10. When syscom1000T base station connected to ClearCom702, beltpack can hear voice from 702 beltpacks, but 702 can not hear voice from syscom1000T wireless beltpacks

A: AUDIO OUT interface of syscom1000T base station should be connected to the Program IN interface of ClearCom 702 base station



Thanks