



MARS 400S USER NOTES

SHENZHEN HOLLYLAND TECHNOLOGY CO., LTD

KEY FEATURES



- **Multiple Platforms Monitoring:** support 1 transmitter with 2 receivers, or 1 transmitter + 1 receiver+ 4 iOS or Android smartphones and tablets. The transmission range is up to 400ft.
- **Low Latency:** less than 0.1s.
- **SDI&HDMI:** support both SDI&HDMI on the transmitter and the receiver.
- **Dual Power Supply Options:** support 12V DC power supply and NPF series of batteries. The system also comes with a low-battery warning indicator.
- **Easy to Operate:** both the transmitter and the receiver are equipped with OLED screen for easy setup and device information display.
- **Bilingual System:** support language switch between English and Chinese.

KEY FEATURES



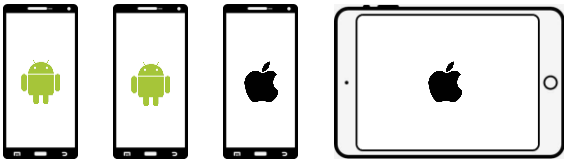
- Strong Anti-Interference Capability
- It has 8 channels and supports up to 5 systems working at the same time on one site.
- **Channel Scan** : automatically scan the current environment to identify channels with or without interference.
- **Scene Mode**: support image mode, balance mode and speed mode
- **Easy to Upgrade**: support USB firmware upgrade remotely on both the transmitter and the receiver

PARAMETER



	Transmitter	Receiver
Interface	HDMI Input SDI Input 2 Antenna Interfaces (RP-SMA Male) DC Input, Type-C USB;	HDMI Output SDI Output 2 Antenna Interfaces (RP-SMA Male) DC Input, Type-C USB;
Power Supply Range	6~16V DC	6~16V DC
Power Consumption	<10W	<6W
Net Weight	165g	165g
Size	(L x W x H) : 109*62*29mm External antennas and battery plate excluded	(L x W x H) : 109*62*29mm External antennas and battery plate excluded
Input Video Format/	HDMI: 480P60, 576P50, 720P50/59.94/60, 1080i50/59.94/60, 1080P23.98/24/25/29.9/30/50 /59.94/60 SDI: 1080P60/59.94/50 (Level A/B) 1080I60/59.94/50 1080P30/29.97/25/24/23.98, 1080Psf25/24/23.98 720P60/59.94/50	/
Output Video Format	/	HDMI: 480P60, 576P50, 720P50/60, 1080I50/60, 1080P24/25/30/50/ 60 SDI: 1080P60/50 (Level A) ;1080I60/50;1080P30/25/24/ 1080Psf25/24;720P60/50
Frequency	5.1—5.9GHz	
Modulation Mode	OFDM	
Transmission Power	Maximum 21dBm	/

TYPICAL SETUP



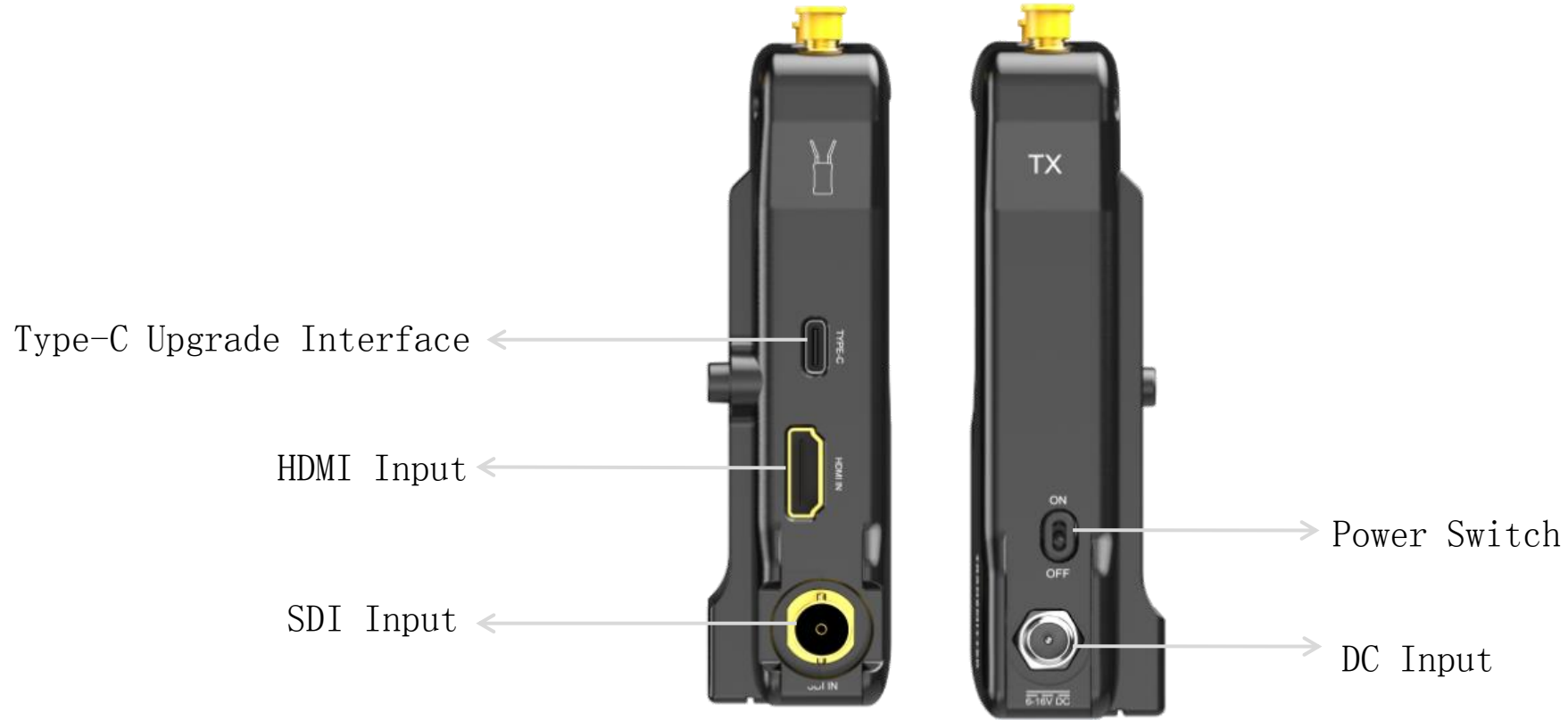
Support up to 4 iOS or Android smartphones and tablets.



TRANSMITTER INTERFACE



TRANSMITTER INTERFACE



TRANSMITTER INTERFACE

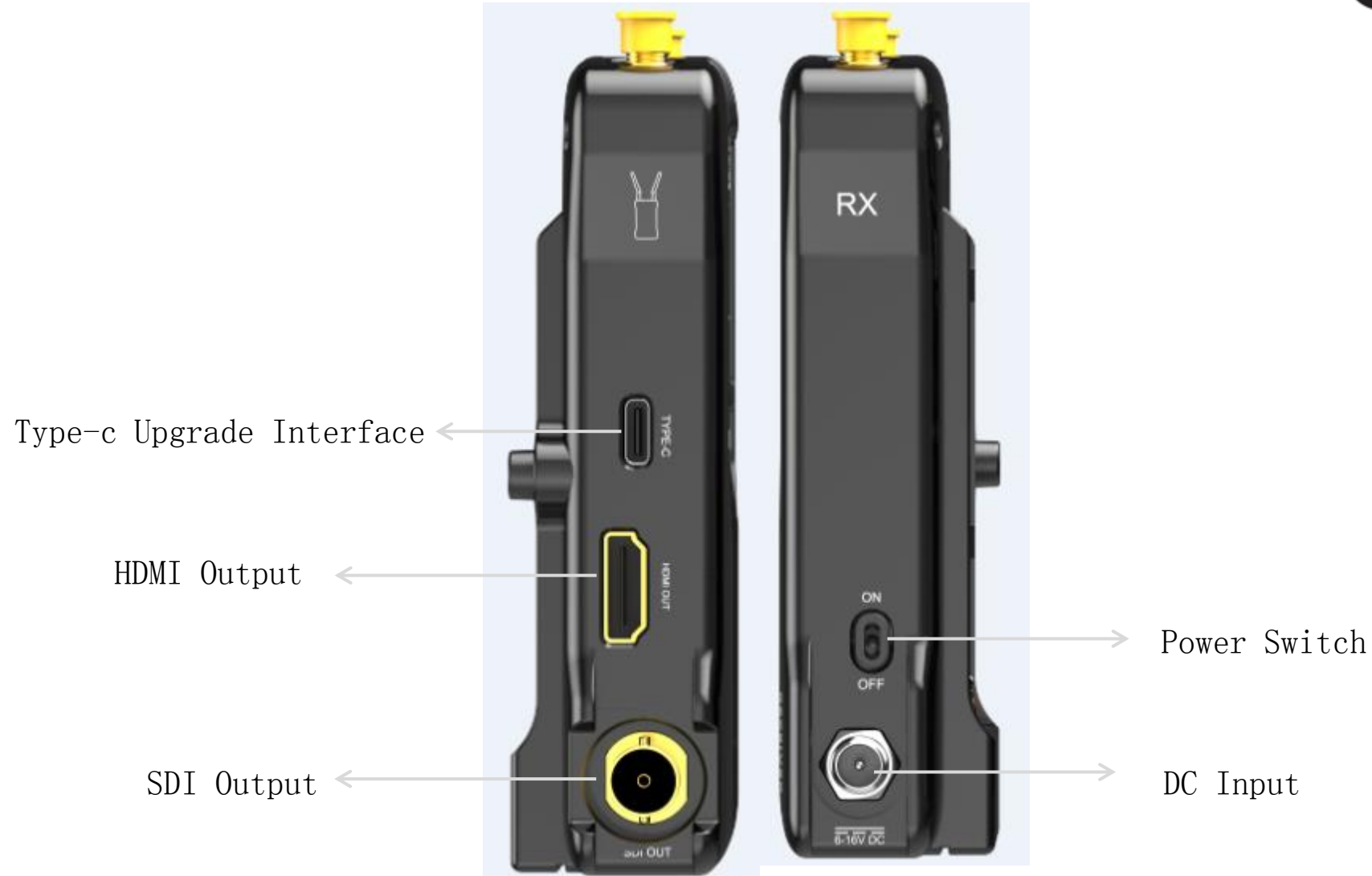


Battery Lock

RECERIVER INTERFACE



RECEIVER INTERFACE



RECERIVER INTERFACE



Battery Lock

TRANSMITTER MENU FUNCTION

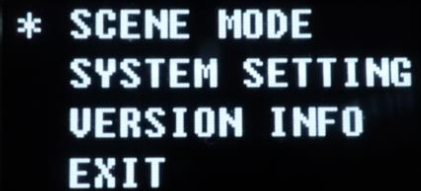


SCENE MODE
IMAGE MODE
* BALANCE MODE
SPEED MODE

IMAGE MODE: prioritize the video monitoring over image quality when there is interference.

BALANCE MODE: prioritize the video monitoring over low latency when there is interference

SPEED MODE: balance the image quality and latency of the video monitoring when there is interference.



* SCENE MODE
SYSTEM SETTING
VERSION INFO
EXIT



SYSTEM SETTING
* LANGUAGE
PAIR
RETURN

LANGUAGE: support language switch between Chinese and English

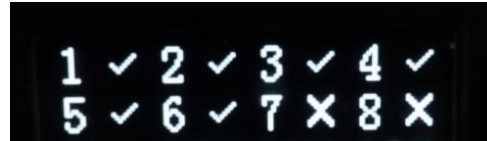
PAIR: pair the transmitter and the receiver

Long press the “OK” button to enter the root menu on the transmitter.



VERSION INFO
B0411DE06582
v1.0.3.0
* RETURN

RECEIVER MENU FUNCTION



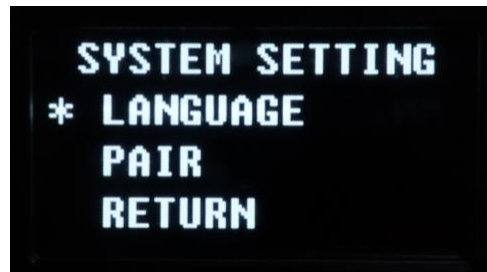
1 ✓ 2 ✓ 3 ✓ 4 ✓
5 ✓ 6 ✓ 7 ✕ 8 ✕

Try to avoid channels with “x” since it indicates the channels are with interference



* CHANNEL SCAN
SYSTEM SETTING
VERSION INFO
EXIT

Long press the “OK” button to enter the root menu on the receiver.



SYSTEM SETTING
* LANGUAGE
PAIR
RETURN

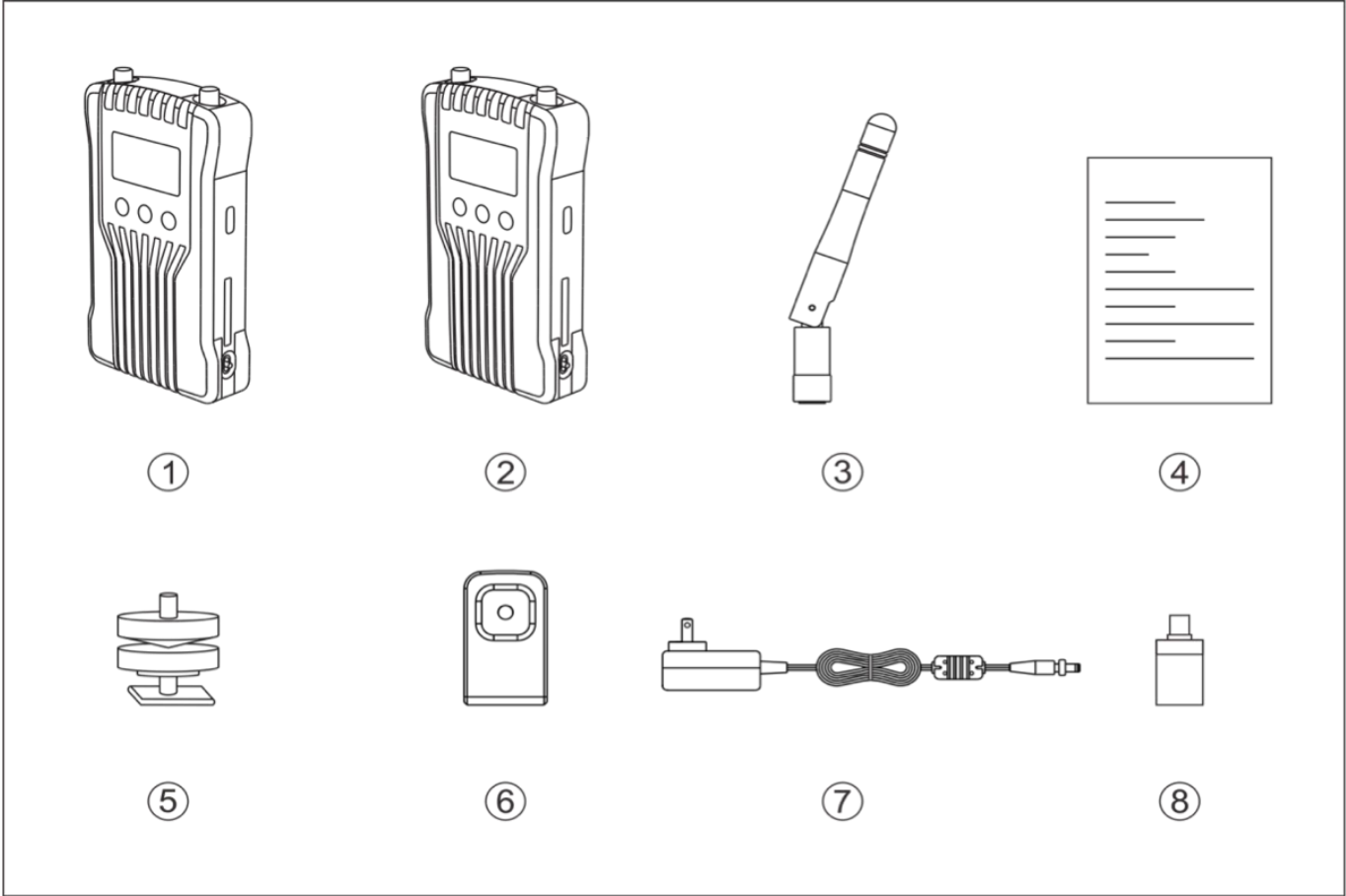
LANGUAGE: support language switch between Chinese and English

PAIR: pair the transmitter and the receiver



VERSION INFO
B0411DE06582
v1.0.3.0
* RETURN

PACKING LIST



① Transmitter	x1	
② Receiver	x1	
③ Antenna	x5	
④ Quick Guide	x1	
⑤ Cold Shoe	x1	
⑥ Expansion Accessory	x1	
⑦ DC Adapter	x1	
⑧ Type-C Converter		x1

FAQ



1. How to change the channel?

Press the channel button “UP” or “DOWN ” on the transmitter to change the current channel. Press “OK” to confirm the channel, then the channel of the transmitter and receiver will be automatically and synchronously changed.



2. How to pair the system with a new receiver?

Go to SYSTEM SETTING, and select PAIR on both the transmitter and the receiver, then they will start pairing.



3. What does it indicate when the battery status appears on the screen?

It's the low-battery indicator. It indicates the battery is low and notifies the user to either change the battery or connect the device with a DC power supply.



FAQ



4. How to fast and easily identify channels with interference?

Long press the “OK” button on receiver, and select “ CHANNEL SCAN ” , then the device will automatically scan the current environment and display “√” or “×” for each channel. “√” means the channel is clear of interference while “×” means it is with interference.



5. How to monitor the video shooting with the APP on an iOS or Android device?

Download the “HollyView” APP in the APP store. In the APP, scan the QR code on the back of the transmitter or manually input the device ID shown on the top of OLCD screen on the transmitter/receiver to connect the APP and the system.



6. How to check if the transmitter and the receiver (s) are from the same set?

They are from the same set if the device ID on the transmitter and the receiver (s) are the same.

Thanks